

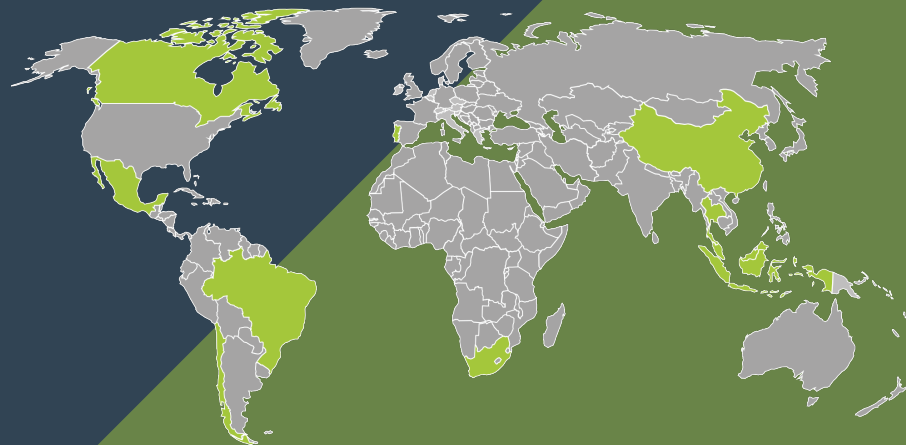


About insight Robotics

Insight Robotics is a pioneering technology company with mission to make the world a better, safer place to live - enable active risk management of the world's assets by generating and making sense of data. We safeguard natural resources and infrastructure around the world with intelligent early-warning threat detection. We develop automated technology and services to help our customers visualize data across large land areas easily and intuitively so they can assess and quantify the risks and plan accordingly.

Our innovations include the world's leading wildfire detection system, a cost-effective aerial survey solution for precise mapping and pinpointing of risk areas and a fully integrated real-time software GIS for precise and powerful insights.

To-date, we have successfully carried out projects and conducted demonstration / awarded pilot projects worldwide, including in Hong Kong, China, Indonesia, Mexico, Brazil, Chile, Canada, Malaysia, South Africa, Portugal and Thailand.



■ Footprint of Insight Robotics

CONTACT US TODAY

info@insightrobotics.com
www.insightrobotics.com

Insight Robotics Limited



Distribution partner:

Thermal + Smoke Wildfire Detection System

THE WORLD'S LEADING EO/IR SOLUTION



24/7
Early Wildfire
Detection

Saving the world
bit by bit, grid by grid



NEW GENERATION

Wildfire Detection System InsightFD 3

Combining advanced electro-optical (EO) and infrared (IR) sensors with enhanced smoke detection algorithms and automatic hot spots detection, new generation of Wildfire Detection System InsightFD 3 is the leading dual solution for early forest fire detection in the world.



Enhanced Robot Features



Light weight for easy installation



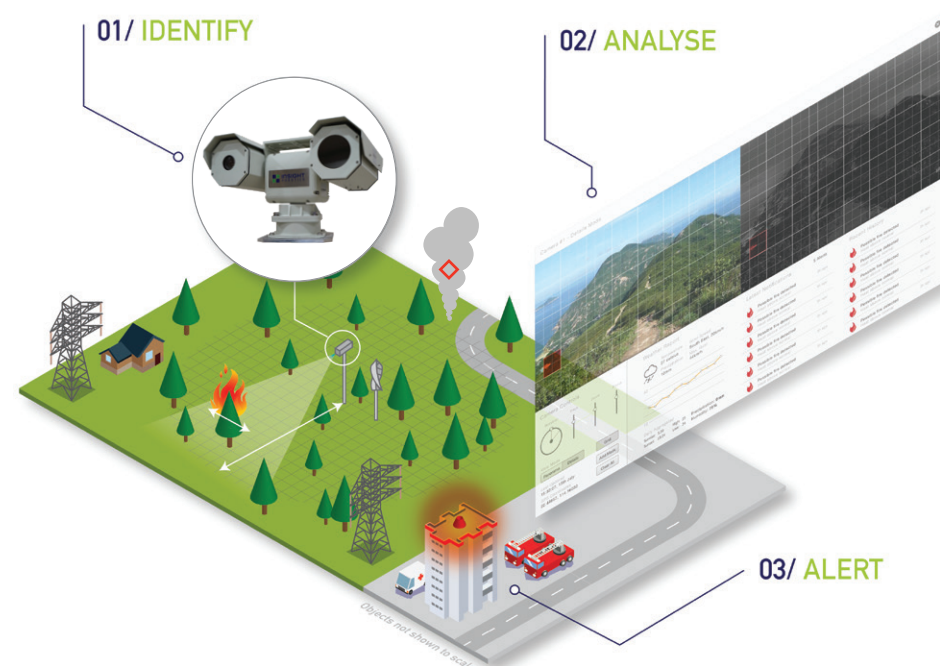
Extremely low power consumption



I/O ports support meteorological station & UPS power management



Modular design for easier maintenance



Equipped with dual EO/IR sensors and sophisticated algorithm, InsightFD 3 proactively monitors 24/7 and identifies when there is a fire/smoke. Visual and thermal images of the affected area are analyzed and displayed on our GIS software platform. Forestry authorities are alerted so they can take immediate action to suppress the fire.

Saving the world bit by bit, grid by grid | Insight Robotics

Innovative & trustworthy approach to managing your assets
Empower operators with higher operational efficiency



Excellent Accuracy

Pinpoint the fire location as small as 6 sq. meters within 8km radius and detect relatively larger fires at greater distances



Fast Detection

Spot over 95% of small fires within 10 minutes of ignition



Large Coverage

Thermal detection: able to detect fires at very early stages up to 8km and larger fire up to 15km; Smoke detection#: up to 15km



Reliable System

24/7 monitoring with real-time fire alert and able to work under tough and harsh outdoor environment (e.g. smoke, fog, haze, etc.)



Effective Dual EO/IR Solution

Fully automated thermal detection and sophisticated smoke detection algorithm



Cost Savings

Deployment and maintenance cost reduced due to low weight, low power consumption and modular design of robot

Powerful and Highly Intelligent Platform

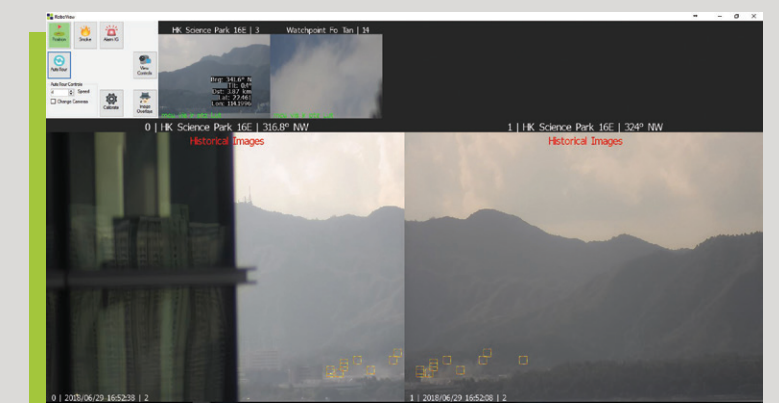
Insight Robotics wildfire detection system is comprised of a network of InsightFD 3 linked to a central control room. The robots automatically communicate to our Smoke UI platform and Geospatial Intelligence System (GIS) platform, Insight Globe which displays data on a 3D model of the Earth, supporting better decision-making and resource deployment.

INSIGHT GLOBE (IG)



- Coverage simulation
- Remote real-time monitoring
- 3D fire & smoke location map
- Panoramic viewing
- Hot object masking
- Historical data & image
- Fire event report
- Email & WeChat notification

SMOKE DETECTION UI



- High-resolution animated images for smoke spotting
- Historical images browser
- Multiple InsightFD 3 triangulation location finding
- Display smoke possible events as ROI for operator attention
- Roboview Image Overlays enhances situation awareness in both day and night time

Smoke detection algorithm is an assisted operation center solution.

* All specifications or features are subject to environmental and weather conditions, and are subject to change without notice.